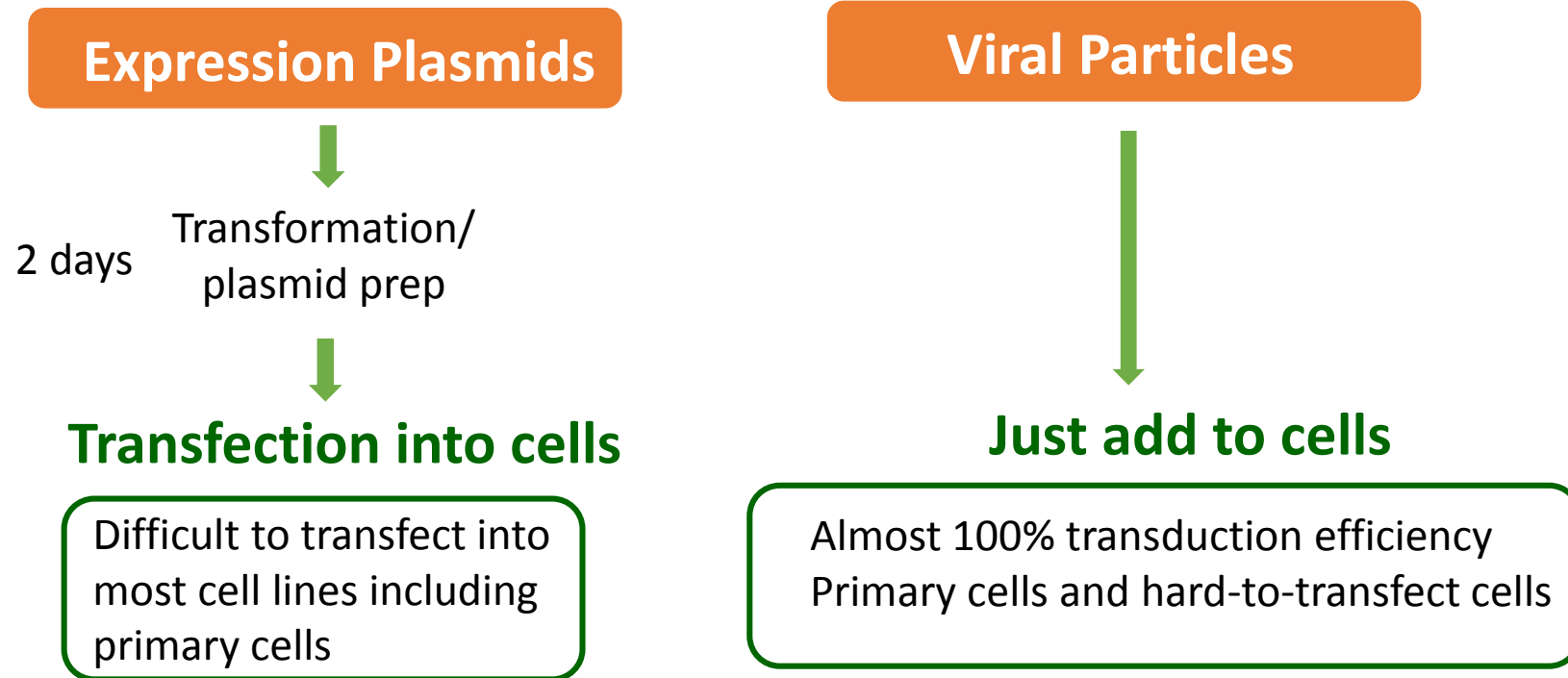


Expression Plasmids vs Viral Particles



DNA Delivery into 293T Cells

Lenti-GFP particles

0ul

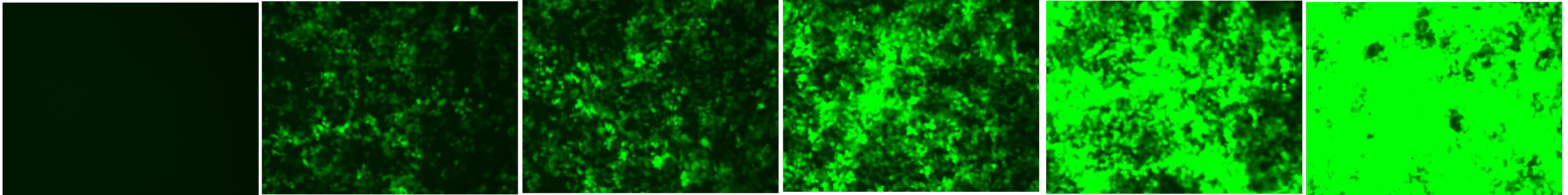
1ul (1.75 MOI)

2.5ul (4.38 MOI)

5ul (8.8 MOI)

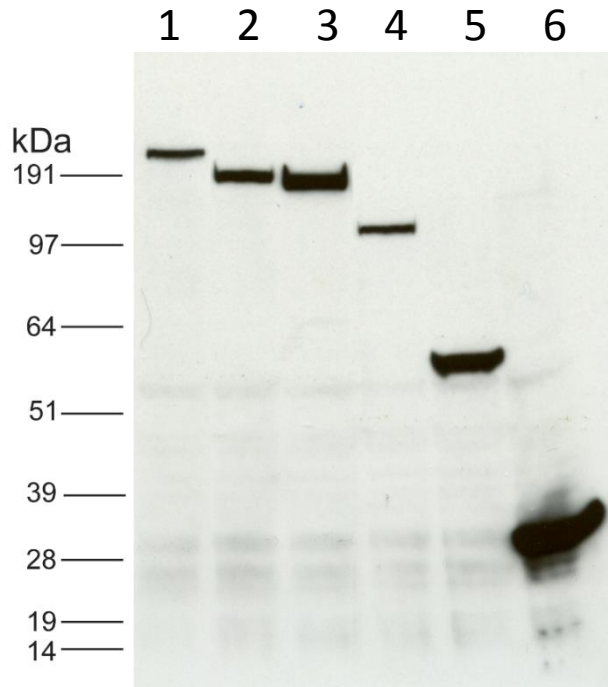
10ul (17.5 MOI)

20ul (35 MOI)



2×10^4 293T cells per well of 96-well plate were transduced with different volume of Lenti-GFP particles ([PS100071V](#): Lenti-C-mGFP) (3.5×10^7 TU/ml). Particles were produced using Lenti-vpak packaging kit ([TR30037](#)). Fluorescent images were taken 72 hours post transduction.

Gene Expression Using LentiORF Particles

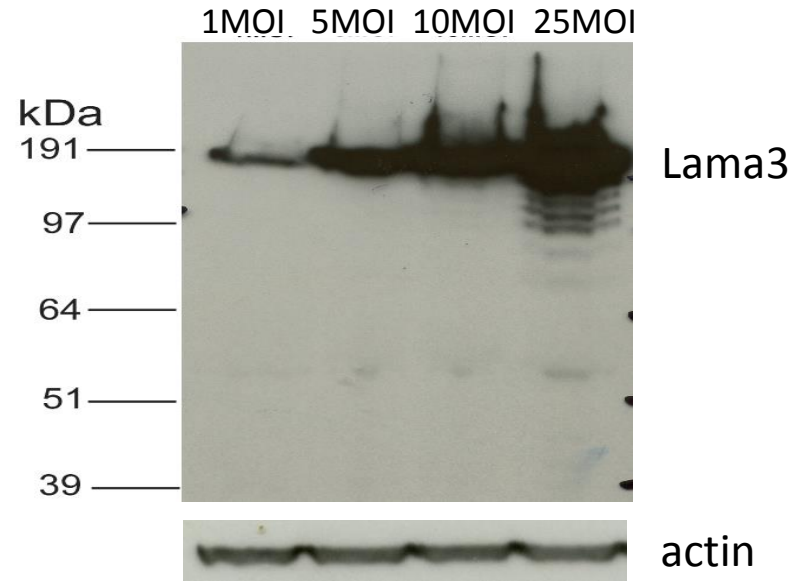


WB with Anti-DDK

	SKU	Gene	ORF Size (bp)	Protein size (KD)
1	RC222886L1V	FREM1	6540	241.9
2	RC215891L1V	LAMA3	5175	190.3
3	RC215069L1V	C3	4992	187
4	RC206047L1V	CBLB	2949	109.3
5	RC221780L1V	TROVE2	1617	60.5
6	RC200469L1V	GRB2	654	25

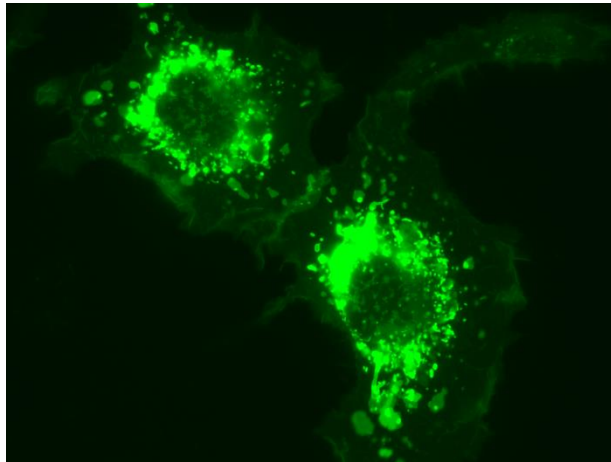
LentiORF particles of 6 different sizes (0.6kb - 6.5 kb) were transduced into 293T cells at 5 MOI. Particles were produced using Lenti-vpak packaging kit ([TR30037](#)). Cells were harvested 72 hours post transduction and lysed in RIPA buffer. Western-blot was performed using anti-DDK (cat# [TA50011](#)).

Gene Expression at Different MOI

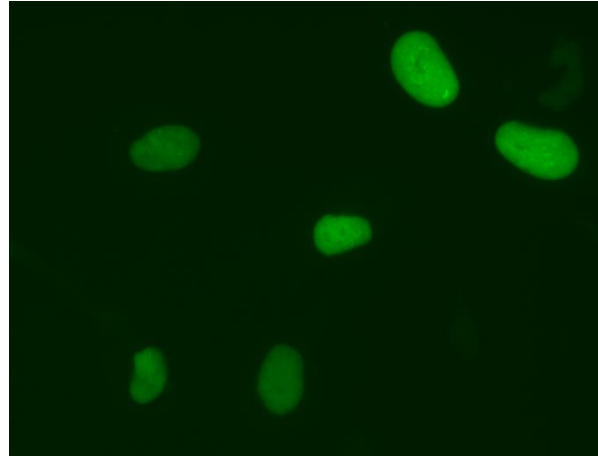


RC215891L1V (LentiORF particles, Human LAMA3, Myc-DDK-tagged) were transduced into HEK293 cells at different MOI. Particles were produced using Lenti-vpak packaging kit ([TR30037](#)). Cells were harvested 72 hours post transduction and lysed in RIPA buffer. Western-blot was performed using anti-DDK (cat# [TA50011](#)).

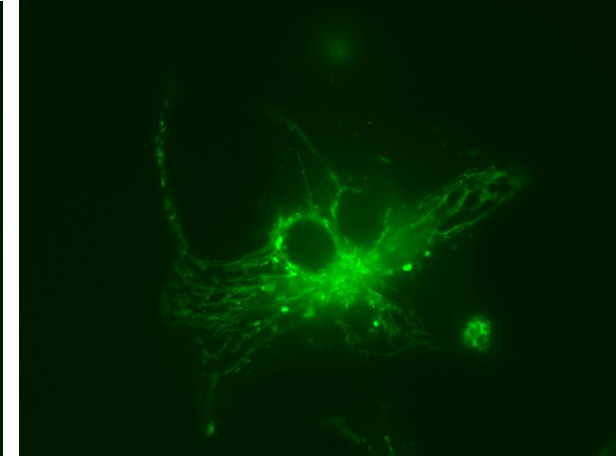
GFP Tagged Lentiviral Particles Can be Used for Subcellular Localization Study



RC221478L2V
Human F11R



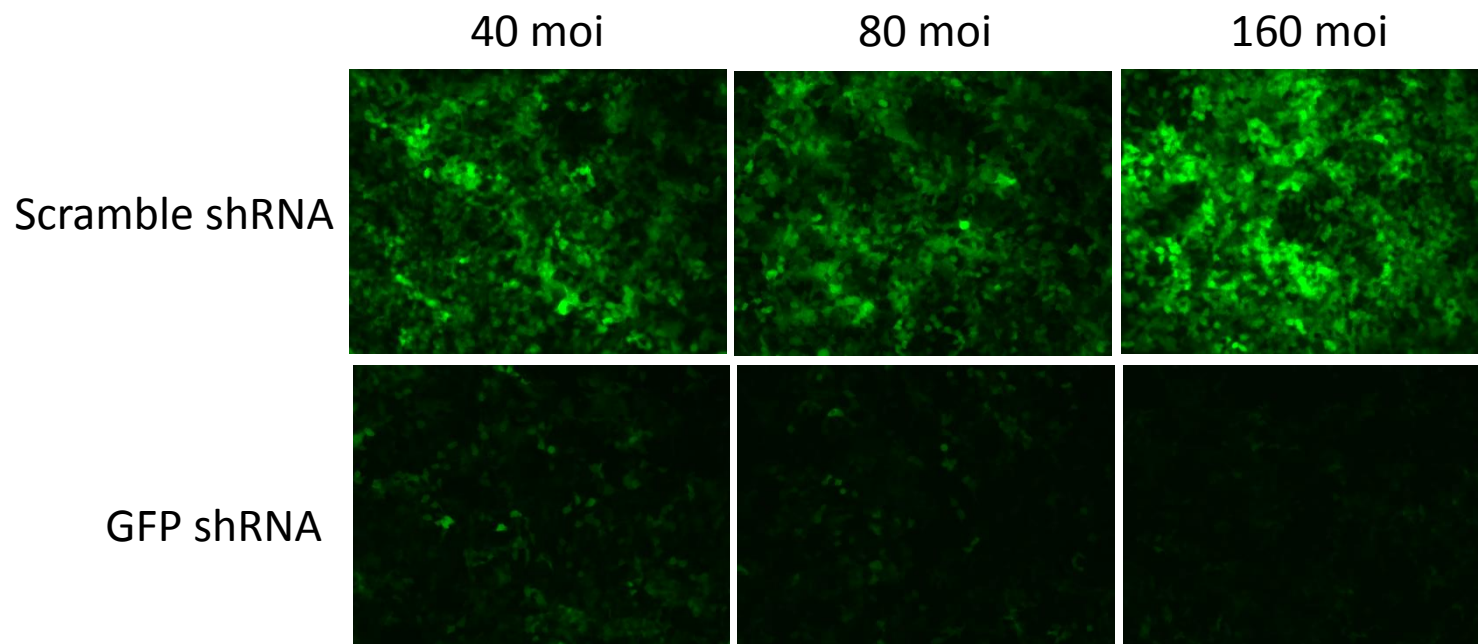
RC229235L2V
Human KLF4



RC209374L2V
Human COX4I1

mGFP tagged LentiORF particles were transduced in HT1080 cells at 10 MOI. Particles were produced using Lenti-vpak packaging kit ([TR30037](#)). Fluorescent images were taken 7 days post transduction.

Knockdown tGFP using Lentiviral Particles



1×10^5 293T cells per well in 24-well plate were transduced with 40 MOI of [TR30021V](#) (pGFP-C-shLenti-scramble) (as resource of tGFP) together with different MOI of scramble lenti particles or different MOI of GFP shRNA particles (shRNA targets tGFP). Fluorescence images taken 72 hours post transduction.